



# Newsletter

## Black Hill Public School

408 Black Hill Road, Black Hill NSW 2322 . P: 0249 303137 . F : 0249 303105  
E: blackhill-p.school@det.nsw.edu.au - www.blackhill-p.schools.nsw.edu.au

Nov 9 2016

Term 4 Week 5



### COMING EVENTS

#### TERM 4

#### Fridays W1-W9 T4—

Swimming K-3 (optional 4-5)

**Sat Nov 12**—Squidditch Night

**Mon Nov 14**—Life Education Visit

**Tues Nov 15**—P&C Meeting

**Tues Nov 22**—Interrelate Program at Beresfield Public School.

**Thurs Nov 24**—County Fair

**Sat Nov 26**—Community Meeting Stockrington State Conservation Area

**Mon Dec 12**—Y6 Dinner

**Wed Dec 14**—Presentation Night

**Thurs Dec 15**—Party Day

**Fri Dec 16**—Water Play

#### MONEY DUE

Sausage Sizzle— Friday morning

Hot Lunch—in by Friday afternoon

Swimming T4—pay weekly or the term

#### PERMISSION NOTES DUE

Life Education Permission note due this Friday November 11.



### Sausage Sizzle

Friday Nov 11 2016

Deanne Wicks

Renee Wheway

Sizzle \$1.50

Poppers \$1 .00

Up N Go \$1.50

## 2017 Enrolments

If you are aware of any families interested in enrolling students for 2017, please ask them to contact the school for information.

## Assembly Time

### 9.00AM FRIDAY MORNINGS

To provide an opportunity for parents to come to assembly, we have changed our assembly time to 9.00 am on Friday mornings for the rest of term.



## KINDER

Our final Kinder Orientation morning was held today. Everyone is looking forward to the new year.



## CIVICS & CITIZENSHIP THEME

### COMPASSION

Compassion is understanding and caring about someone who is in trouble or has made a mistake. It is being kind and helpful to others.

It can mean doing something to help someone else or even just taking the time to listen.

## School Activities

## Term 4 Sausage Sizzle

LUNCH WILL BE AT 12.30PM ON FRIDAYS.

BBQ COOKERS NEED TO START AT 11.45AM

Please note that during term 4 due to swimming lessons on Fridays, LUNCH WILL BE at 12.30pm, therefore BBQ helpers will need to be here at 11.45am to start cooking.



### Inside this issue...

School Info, Sporting Activities, Other .....	Page 2
Life Education Excursion & Note .....	Page 3
P&C News.....	Page 4
Reptile Park Photos.....	Page 5
Community News.....	Page 6
Assembly Report.....	Page 7
Squidditch Info.....	Page 8
P&C Uniform Order .....	Page 9

# Excursions




## Life Education Excursion

All students from K-6 will be attending the Life Education Centre at Edgeworth next Monday November 14. The visit supports our Health/PE/PD program.

There is no cost to students this year as it is subsidised by the Educational Trust.

Please complete the Activity and Permission Note below and return to school no later than Friday November 11. Travel will be supplied by the centre's own bus.



 <p><b>Black Hill Public School</b> 408 Blackhill Road BLACK HILL 2322 Tel 02 4930 3137 Fax 02 4930 3105</p>	 <p><b>Activity Note</b></p>	<p><b>Event:</b> Life Education NSW 2016</p> <p><b>Destination:</b> Life Education Centre, Edgeworth</p> <p><b>Date:</b> Monday November 14 2016</p> <p><b>Dress:</b> School Uniform</p> <p><b>Cost:</b> no cost      <b>Note and Payment:</b> School mail box</p> <p><b>Requirements for the day:</b> No special requirements</p> <p><b>Food Requirements:</b> Normal school lunch and recess</p> <p><b>Transport:</b> Provided by Life Education NSW</p> <p>Kindly complete the permission slip below and return it to the school mail box by Friday, 11 November 2016.</p>	 <p><b>Permission Note – Life Education NSW 2016</b></p> <p>I give permission for my child/children _____</p> <p>_____ of class/es _____ to participate in the Life Education NSW program at the Life Education Centre, Edgeworth on Monday November 14 2016. Travel will be by the Life Education Centre bus at no cost.</p> <p>No cost to student.</p> <p>Signed: _____ Date: _____</p>
---	---	---	---

## School Information

### POP payment system

**This payment option is available on our school website.** Access the website ([www.blackhill-p.schools.nsw.edu.au](http://www.blackhill-p.schools.nsw.edu.au)) and the payment tab at the top of the page.

When you access the \$Make a Payment you must enter:

**STUDENT'S NAME & DATE OF BIRTH**

**Only enter the fields that have an asterisk beside them.**

These details are entered each time hosted by Westpac to ensure that your credit/debit card details are captured in a secure manner and are not passed back to the school. You have the ability to check and

change any details of the payment before the payment is processed. Receipts can be emailed and/or printed at the time of payment. Payments are passed daily to the school where they will be receipted against your child's account. A further receipt will not be issued by the school.

For any enquiries regarding the Online Payment process, please contact the office.

**Note: Payment Ref as indicated on our permission note must be quoted.**

**Also, write your POP receipt number on the student permission note & return to school.**

### Student Absence Notification

**A reminder that if your child is absent from school, please notify the office between 8am and 9.15am.**

If the office is unattended you can always leave a message on the school's Home Messagebank.

This would help us with the timely marking of our rolls and maintenance of our records.



## Sporting Activities

### Swimming T4

**Our Term 4 Swimming Program continues this Friday. Students in K-3 plus optional Y4&5 are included.**

The bus leaves school at 1pm after an early lunch and we leave the pool at 2.30pm to be back at school by 3pm. We require all notes to be returned before Friday.

Payment can be made weekly—\$9.00 or upfront for the term—\$81.00.

**\*Bring swimming gear in a separate bag on Friday.**

**POPS Online payment** is available for this activity.

Use payment option **Sport**

Payment description  
**swim2016**

## Other

### Raffle

**Don't forget to buy your raffle tickets for the Sydney Swans 2016 team jersey signed by the players.**

Raffle tickets are available at the office for:

**\$2 per ticket or \$5 for 3**

tickets to raise funds to improve technology in our school.

Drawn on Presentation Night Dec 14. .



## P&C News

### Hot Lunches

**Hot lunches will continue on Wednesdays throughout this term.....**

Please have your order in the designated box in the office foyer by **Friday afternoon** in the bag provided with your **child's name, class and order written on the front and correct change enclosed**. Combined payments for siblings are accepted, if a note is written on the bag that does not contain the money.

If you have put an order in, but your child will be absent on the Wednesday, contact Jo on 0475 868 143 by 9am. If you do not do this and there is a sibling at school on the day, the lunch will be sent home with them. If there is not a sibling at school and Jo is not contacted, the lunch will be thrown away and no credit will be issued for the following week.



### Uniforms

**Attached you will find our last uniform order for the year.**

When placing your orders please keep in mind that we only do 2 uniform orders per year (Term 1 and Term 4).

Should you require any additional items throughout the year, we keep a limited supply of stock and may be able to help you out with your requirements.

Kindly complete and return the attached uniform order with full correct payment to the school mail box by Friday, Nov 18.

Please contact Amanda on 0438 586 404 with enquiries.

### Pie Drive

It is time again for our Pie and Lamington drive so it's a great time to fill the freezer and get ready for the summer and those unexpected Christmas visitors. There is a great selection of pies, slices and lamingtons so please pass your attached order forms around to your family and

friends as all money raised supports the school. Your orders and correct payment need to be returned to school by **Wed Nov 30**, and the orders will be ready for pick up from school by **Thurs, Dec 8**. Please make cheques payable to **Black Hill Public School P&C**

### Squidditch Night

**The fourth annual Squidditch World Amateur Title will be held on Saturday November 12 beginning at 5.00 pm.**

Dinner and dessert must be pre-ordered and paid for by 3.00pm today. No late orders can be accepted.

Please see the invitation attached to this newsletter for further information.

If there's anyone who can help with the cooking on Friday November 11 (during the day), or with the serving of food on the night, please contact Anne-Marie on 0418 653 105 or Mel on 0407 662 961.

### Christmas Puddings

**This year, for our Christmas Pudding Fundraiser we have the award winning puddings from Newcastle's Pudding Lady.**

These puddings make excellent gifts for family, friends or staff.

We are selling them for way below the Recommended Retail Price, so if you are considering buying a Christmas pudding this year, then buy one where you get a truly great pudding and you assist us in the process.

All orders with full payment are due back by Friday November 25.

There will be no chance to add to the order after this date so make sure you get your orders in.

Please direct any enquiries to Anne-Marie on 0418 653 105.



### HOT LUNCH PRICE LIST

Plain Pies	\$2.50
Quiche	\$2.50
Sausage Roll	\$2.00
Poppers	\$1.00
Apple	
Orange	
Apple / Blackcurrant	
Tropical (apple banana mango)	
Up&Go	\$1.50
Vanilla	
Banana	
Caramel	
Chocolate	
Strawberry	

### TUCKSHOP PRICE LIST

Quelch Fruit Ice Blocks	50c
Monster Noodles	60c
Jumpys Snacks	60c
Rice Snacks	60c
Shapes Crackers	60c
LCM Bubble Bars	60c
Muesli Bars	60c
Teddy Bear Biscuits	60c
Mini Oreos	60c
Milo Starz Snacks	60c
Fun Sticks	60c
Jelly Cup	60c
Chocolate Mousse	60c
Fruit Juice Poppers	\$1.00
Up&Go Milk	\$1.50
Frozen yoghurt	\$1.50





## UNIFORM ORDER

Kindly complete and return with full correct payment to the school mail box by **Friday 18 November 2016**

Please make all cheques payable to **Black Hill P&C Association**

Name: _____
Class: _____
Contact Name & Number: _____

Item Description	Size 4	Size 6	Size 8	Size 10	Size 12	Size 14	Size 16	Small (Adult)	Medium (Adult)	Amount
<b>Blue polo shirt</b> with emblem Price: \$23.50 (except size 16)							NB: \$25.50			
<b>Gold polo shirt</b> – gold shirt with blue striped collar and emblem Price: \$27 (except size 16)							NB: \$30			
<b>Polar fleece jacket</b> – royal blue with emblem Price: \$28 (except adult sizes)								NB: \$34	NB: \$34	
<b>Polar fleece vest</b> – royal blue with emblem Price: \$20 (except adult sizes) NB: Sizing is smaller than the polar fleece jacket (i.e. a size 8 vest is a snugger fit than a size 8 polar fleece jacket)								NB: \$24	NB: \$24	
<b>Tracksuit pants</b> – straight leg, royal blue (fleece) Price: \$24.50 (except size 16)							NB: \$28.50			
<b>Bootleg pants</b> – royal blue, cotton elastane Price: \$18										
<b>Skorts</b> – royal blue Price: \$15										
<b>Shorts</b> – royal blue with zip pocket Price: \$20 (except size 16)							NB: \$22			
<b>Slouch hats</b> – royal blue Price: \$11	Small – 54cm		Medium – 56cm		Large – 58cm		Extra Large – 60cm			
<b>Embroidered School Emblem</b> Price: \$2										
<b>Total</b>										\$

For further enquiries, please phone Amanda on 0438 586 404. If you would like a text message to confirm receipt of your order please text Amanda.

## P&C Info

The students of Black Hill invite you to join us for the

Fourth Annual



# Squidditch World Amateur Title

**Saturday 12<sup>th</sup> November**  
**Beginning at 5.00 pm**

100 Club

&  
Coin Toss

Squidditch is a game that was created at BHPS and is lots of fun. Come along and watch or join in and assist your team to victory!

A dinner of pasta, salad, garlic bread and dessert can be purchased for just \$10 per person or dessert only can be purchased for \$3 per person. We will also be selling soft drinks, water, tea and coffee.

**Dinner must be pre-ordered and paid for in advance.**

If you have any questions about the dinner, please contact Anne-Marie on 0418 653 105 OR Mel on 0407 662961

**If you are joining us for dinner, please fill out and return this form with payment by Friday 5<sup>th</sup> November**

Family Name: \_\_\_\_\_

**Dinner & Dessert @ \$10 per person**

Number of people having beef pasta bake: \_\_\_\_\_

Number of people having vegetarian pasta bake: \_\_\_\_\_

Number of people having gluten free pasta bake: \_\_\_\_\_

Number of people having brownie slice with vanilla cream: \_\_\_\_\_

Number of people having jelly with ice cream: \_\_\_\_\_

I am enclosing \$\_\_\_\_\_ at \$10 per person for dinner & dessert.

**Dessert Only @ \$3 per person**

Number of people having brownie slice with vanilla cream: \_\_\_\_\_

Number of people having jelly with ice cream: \_\_\_\_\_

I am enclosing \$\_\_\_\_\_ at \$3 per person for dessert only.



### Land transfer to National Parks and Wildlife Service - what does it mean for you?

Former Coal and Allied offset lands will be transferred to National Parks and Wildlife Service to become **Stockrington State Conservation Area**. Come and meet your new neighbour and talk about your interests and concerns.

We are interested in:

- listening to ideas, concerns and solutions for management
- working with local communities and neighbours
- addressing illegal rubbish dumping



Sugar glider

### Where to find us:

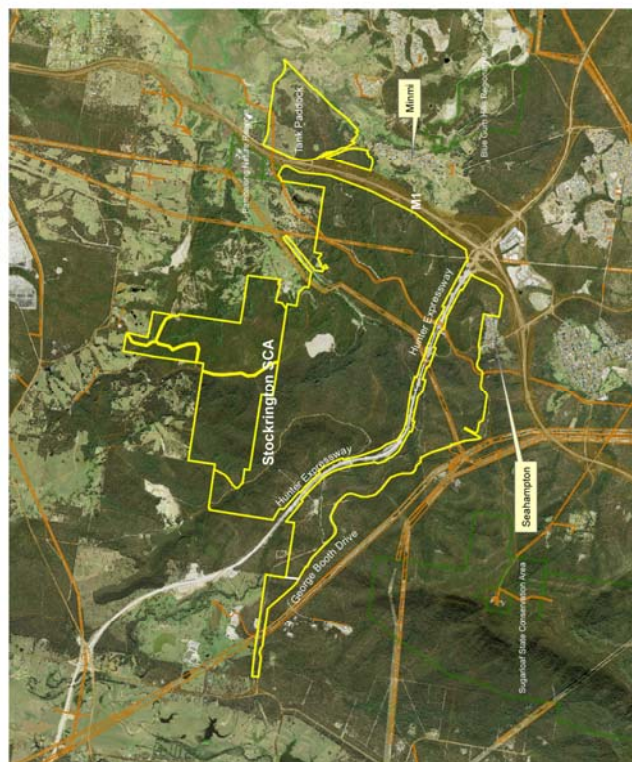
**Sunday 6th November** at Minmi Public School Fete - 10.30 am to 2.30 pm

**Saturday 26th November** at Blackhill Public School - 10 am to 2 pm

**Sunday 27th November** at Seahampton cnr George Booth Drive & Seahampton Road - 10 am to 2pm

or call Ranger Kathleen Straw on Ph 02 4946 4105

*This project is a NSW EPA Waste Less, Recycle More initiative funded from the waste levy.*





## Community News

### Interrelate Programs

**Beresfield Public School** is hosting the program on Nov 14.

Please contact Beresfield Public School directly on phone number 49 661146 for bookings and payment which can be done by EFTPOS over the phone.

When kids ask "the" questions...  
**Interrelate has the answers!**

Interrelate is a specialist organisation with over 90 years' experience teaching sexuality and relationship education in NSW schools. Interrelate educators are highly trained and skillful presenters.

The topic of sexuality is handled with sensitivity, openness and humour. The program offers an interactive approach to learning, with a variety of audio-visual materials, discussions and games.

**Session 1: Where did I come from?**  
1-hour session: Years 3-6

**Session 2: Preparing for puberty**  
1-hour session: Years 5-6  
Years 3-4 can attend at parent's discretion

**Date: Tuesday, 22nd November 2016**

Specialty books are available for purchase on the night.  
Keep a look out for flyers (coming home with your child before the program) outlining session content.

**interrelate**  
relationship experts since 1926

### CHRISTMAS CHARITY

In last week's newsletter you received a flyer for the Newcastle Basket Brigade. The P&C invites you to support this organisation this Christmas, providing special baskets of food and fits that are delivered to local residents who are less fortunate than others. The baskets consist of such things as staple foods, festive foods/items, and toys for the children of the families. The idea is to provide yummy things to make a festive Christmas Day and staple items for the days before and after. If you would like to contribute, you can do so in one of three ways:

- Place a donation in the box that can be found in the school office
- Participate in one of Brigade's wrapping days on December 10 or 11.
- Make a financial contribution to support the efforts of the all-volunteer project.

Look up **Newcastle Basket Brigade** on Facebook!



### Stockrington Lands

The Coal & Allied offset lands have finally been transferred to National Parks and Wildlife Service, and will become Stockrington **State Conservation Area**. The attached flyer on the preceding page from Ranger Kathleen Straw details a Community information day at Black Hill School on Saturday Nov 26, 2016 (10am to 2pm). Please come along and meet your new neighbour—and talk about your interests and concerns.





## Assembly Report - Friday November 4

### Miss Gardoll's Awards

Merit	Tim
	Alexia
English Award	Sianna
Mathematics Award	William
Creative Arts Award	Isabelle
Quality Work Award	Alecia



### Mr Braye's Awards

Merit	Isabelle
	Nate
English Award	Luella
Mathematics Award	Eden
Creative Arts Award	Sean
Quality Work Award	Matilda

### Mrs Strickland's Awards

Merit	Sophia
	Cooper
English Award	Isaac
Mathematics Award	Abby
Creative Arts Award	Nash
Quality Work Award	Chloe

### Mr Forbes ' Awards

Merit	Lily
	Indianna
English Award	Darcy
Maths Award	Anton
Creative Arts Award	Tallulah
Quality Work Award	Archer

### Mrs Adamthwaite's Awards

Merit	Allira
	Jacob
English Award	Olivia W.
Mathematics Award	Ethan
Creative Arts Award	Alysha
Quality Work Award	Jack

### Prefect's Report:

### Prefect's Award: / Special Awards

Braith, Chloe, Lachlan, Kyle, Isabella

### House Cup



Assembly Term 4—9.00 AM  
This week 2-3 presents an item



# Black Hill Public School - Christmas Pudding Drive

## Premium Christmas Puddings by Newcastle's Pudding Lady

This order is for: (Your child/childrens name)

Class:

Please return your order with payment by:  
Friday 25th November

All our handmade Christmas

Puddings are boiled in the cloth and then vacuum sealed for protection.

Store in the pantry prior to use.



OR



CUSTOMER: Please insert the NAME of purchaser and then numbers required of each product by that person	Traditional 500g Round or Log		Traditional 1kg Round or Log		Traditional 1.5kg Round Serves 12-15		Gluten Free 500g Round Serves 4-5		Gluten Free 1kg Round Serves 8-10		Brandy Custard sauce 250ml		Brandy Butter 200g		Chocfusions 500g Dessert Pudding Log		Amount Payable
	Rnd	Log	Rnd	Log	Rnd	Log	Rnd	Log	Rnd	Log	Rnd	Log	Rnd	Log	Rnd	Log	
																	\$
																	\$
																	\$
																	\$
																	\$
																	\$
																	\$
<b>Grand Total: \$</b>																	
<b>Your Name:</b>										Collection Date: A text will be sent out when your puddings are ready for pick up.							
<b>Your Contact Mobile Phone Number:</b>																	

If you have any enquiries please contact Anne-Marie on 0418 653 105.